



WiFi NVR Kits

User Manual

V1.0.1

Declaration

Thank you for purchasing our company's products, any questions&assistance you need, welcome to contact us at any time.

This user manual is suitable for wifi NVR Kits(wireless NVR&wireless cameras). It will be updated according to product's updating, new version will be not noticed specifically.

If this manual's any products description not accord with the real products, please in kind prevail.

Safety Precautions

- 1、 Please change the device's default password in case that your account is stolen.
- 2、 Please do not place and install equipment directly under the sunlight or near heating device.
- 3、 Please do not install equipment at moist place or place with dust or soot.
- 4、 Please keep equipment installed horizontally, or install equipment in a stable place, to avoid the equipment falling down.
- 5、 Please avoid liquid dropping on the equipment, make sure no objects filled with liquid on the equipment and prevent liquid from leaking.
- 6、 Please install the device in a well ventilated place, do not block the vents of the equipment.
- 7、 Please only use equipment within rated input/output.
- 8、 Please do not disassembly at liberty.
- 9、 Please transport, use and reserve the equipment within allowing humidity and temperature.

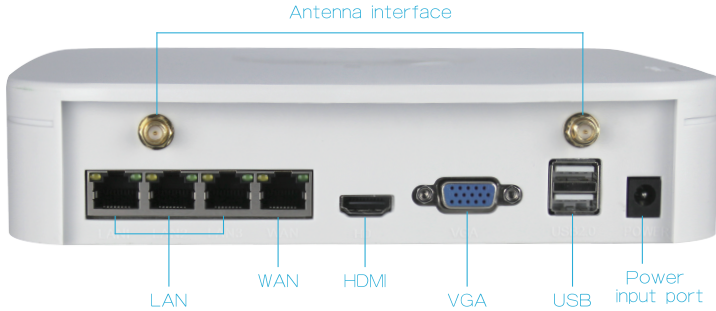
Disclaimer

Please pay your attention to exceptions below:

- 1、 Should any reasons below cause the product destroyed or service stop, we will assume no responsibility for your or third party's personal injury and property loss: ① No installation or use according to instruction strictly. ②For sake of state-building maintenance or public interest. ③ Cases of force majeure. ④ Your personal or third party reasons. (Include no limitation use of third party's products, software or components)
- 2、 Our company have not in the form of any express or implied to guarantees the product is suitable for the special purpose or use. This products can't be used in medical treatment/safety or o other products breakdown lead to life risk or personal injury and WMD, CBW, nuclear explosion or any unsafe nuclear energy uses etc dangerous or violation of humanitarian purpose. Any loss or liability resulting from the above purpose, will be borne by you.
- 3、 With correct installation and use, this product can detect the illegal intrusion, but it can not avoid accidents and personal injury or property damage due to these accidents. Please be on the alert in your daily life, reinforce your safety awareness.
- 4、 Our company assume no responsibility for any indirect or occational or special or punitive damages, request, property damage or any loss of data or file. Within the max scope of law allowed, our company's compensation is no more than the products amount you paid.

Products Appearance Description

Power input port, WAN, LAN (1, 2, 3) , VGA, HDMI, USB, Antenna interface



Wireless NVR Kits Quick Installation Guide

This Wireless NVR Kits, easy installation, no need cable, plug and play, no need any set up,

Wireless communication uses automatic passwords generation mechanism to ensure that the monitored video will be not overheard under the default passwords, so please take it easy to use our system. (The codes have been paired; in case the ESSID and passwords had been changed, you need to match codes first.)

Step1 : Installation Preparation

1. Install HDD. Make sure all power are cut before intalling. Installation tool: Cross screwdriver.

Notes: Please use the professional hard disk recommended by supplier.

(The picture below are for your reference only)



1) Unscrew the four fixed screws, remove the upper cover.



2) Fix the HDD on the bottom panel with screws.



3) Connect data wire and HDD wire between PCB board and HDD.



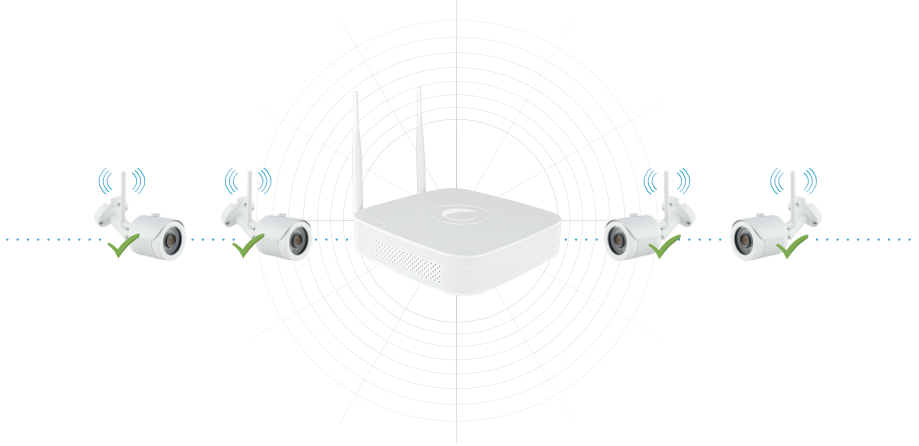
4) Fix the upper cover with screws.

Wireless NVR Kits Quick Installation Guide

2. Install Antenna. WiFi NVR in the center, make antenna vertical so it can transmit the signal to all around. IPC antenna should be on the same level or parallel position to receive the better signal. The antennas all relative is not suggested.

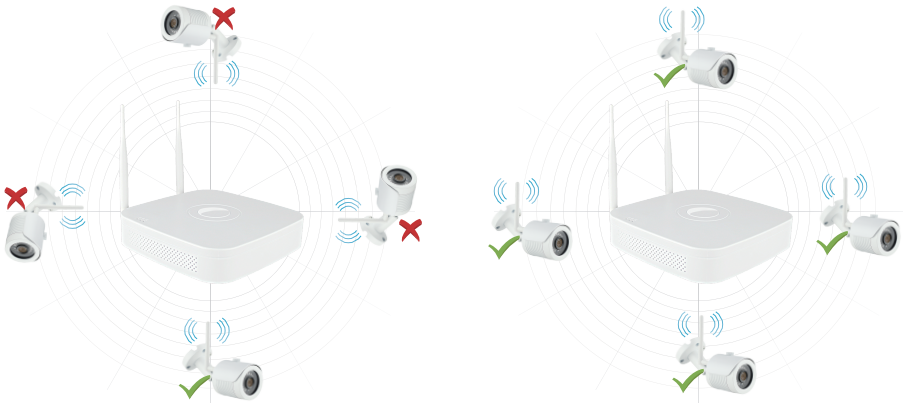
Ideal Installation Mode

Correct demonstration



Not Suggested

Suggested

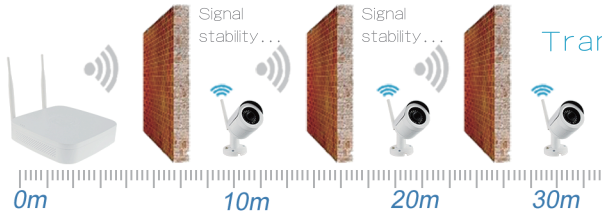
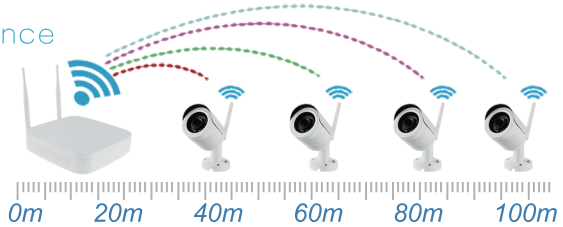


Wireless NVR Kits Quick Installation Guide

Transmission Distance

100 meters

(No Obstacles)



Transmission Distance

30 meters

(2 Walls)

Recommended Distance for Installation: 100 meters for no obstacles space, 30 meters for environment with 2 walls.

Notes: The coverage area will be affected by specific environment, distance data are for references only.

3. Make sure WiFi system working well. Connect NVR to monitor, all devices are power on, no need any setting, auto-pair.

Notes: Please make sure the NVR video output and monitor input have been connected. Please use the matched power supply in the package, in case that the abnormal power supply lead to abnormal working and destroy the NVR.

WiFi IPC

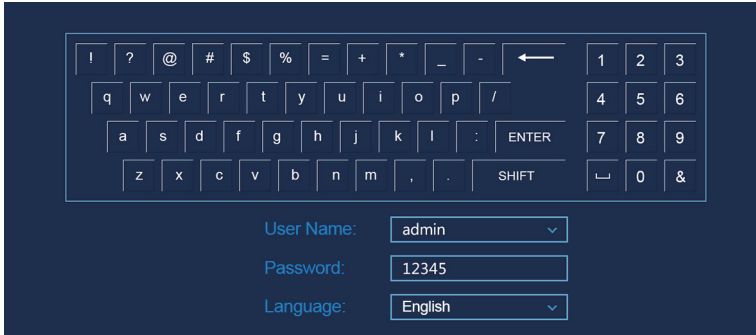


System Login

Start up the NVR, right click the desktop and enter the user log in interface.

Input user name and passwords

System default user name: “admin” , password: “12345” .



Preview

Enter preview interface after device start up. Preview interface include date and time of system, and channel name. Log in system, double left click to switch between full screen and multi-screen.

1.Enter menu mode

Log in system, right click to popup shortcut menu.

Left click [main menu], enter the main menu interface.

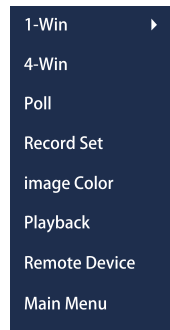
Left click [playback], enter playback operation interface.

Left click [record set], enter record setting operation interface.

2.Exit menu mode

Right click to exit menu mode.

In the menu mode, right click to return to previous menu.



Shortcut menu introduction

Right click to popup shortcut menu, the menu consists with the following three parts:

Preview mode: Select the preview mode in the menu bar you like.

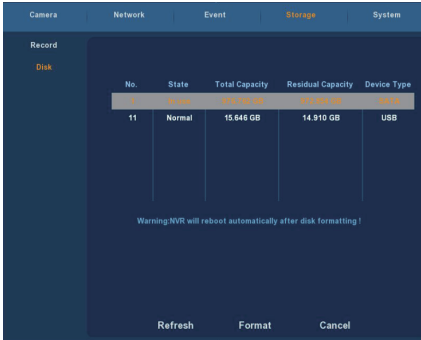
Shortcut menu mode: There are record set, image color and remote device, you can click and the enter corresponding menu directly.

Main menu: It contains operation, informations, and setting three parts. Operation includes [playback], [file backup], [shutdown]; information includes [systems], [log]; setting includes [camera], [network], [event], [storage], [system].

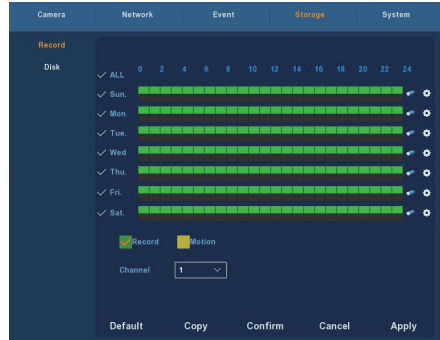


Record Setting

1. HDD formatting. Make sure the hard disk is detected and works well. (You can check status of HDD from menu “Record Set” – “HDD Manage”)
2. Enter “Record Set” interface to set recording from shortcut menu “Record Set” or main menu “Storage” . Default setting is all channels and all time with manual record enable.

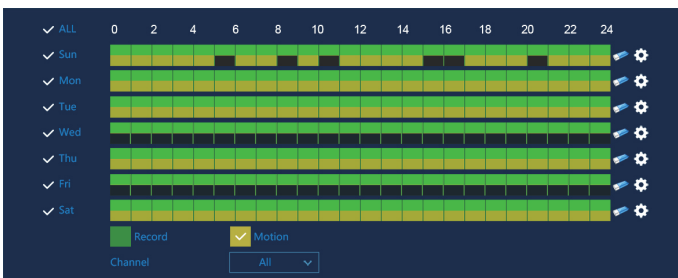
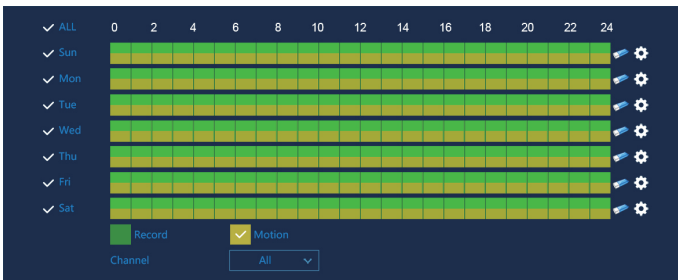


1



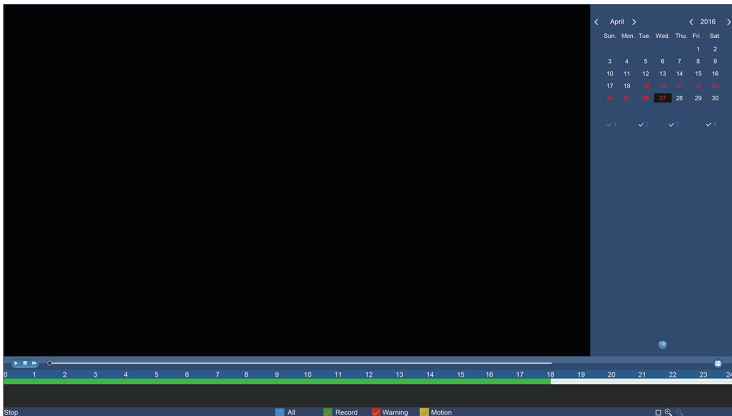
2

3. Motion Detection Setting. Enable “Motion” to activate motion recording, motion sections have no more than 6 times each day. If the setting of manual record and motion record are overlapped, it can only save the motion records while motion detection comes up.



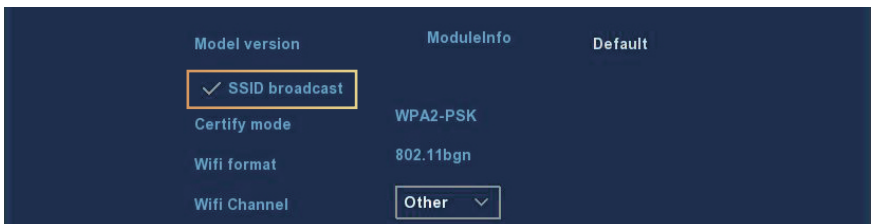
Playback

Enter “playback” interface by clicking “Playback” from shortcut or main menu, select channels and search the record files and playback what you want.



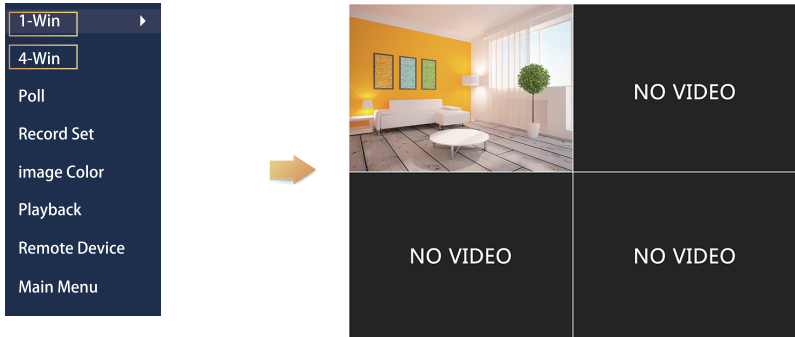
(Video playback interface)

Notice: To promise the safty, please prohibit the SSID brocast after the installation is finished. Enter menu “Camera” – “Wifi”, and tick SSID Brocast on interface you see.

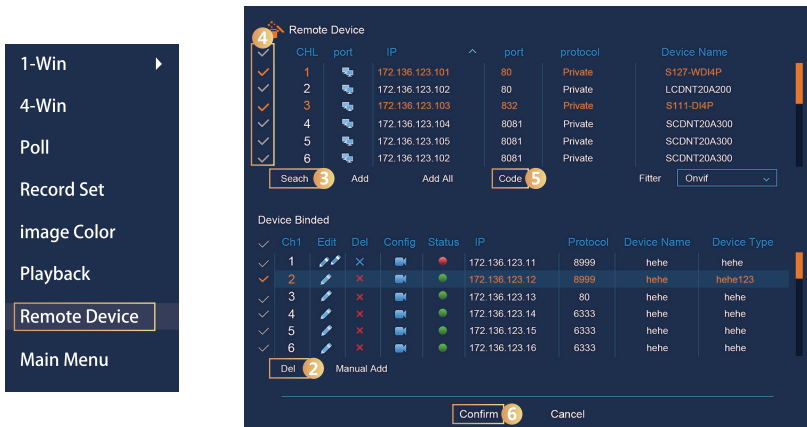


Live View

1. Enter Live View interface by left clicking shortcut menu “1-win” or “4-win” . It is available to add single channel or multi-channels on one screen.



2. The default wireless system has auto-paired, no need any setting. In case there is no image shown or ESSID and passwords have been changed, please pair the codes first.



Please enter “remote device ” to pair the codes step by step:

1. Connect Lan port with network cable between IPC and NVR.
2. Delete all the added devices.
3. Click “Search”
4. Tick all the devices you want to add
5. Click “Code”
6. Click “Confirm”

WiFi NVR Kits User Manual

Webpage NVR Login

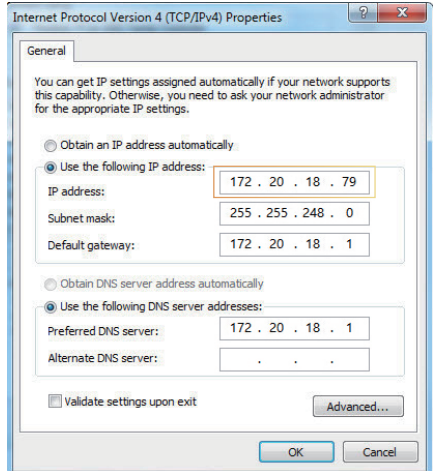
1.NVR Webpage LAN Access:

① Connect Lan port with network cable between your PC and NVR.

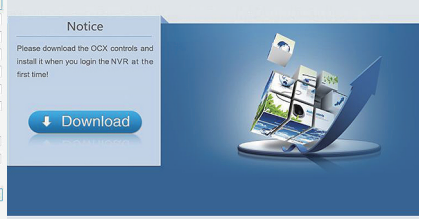
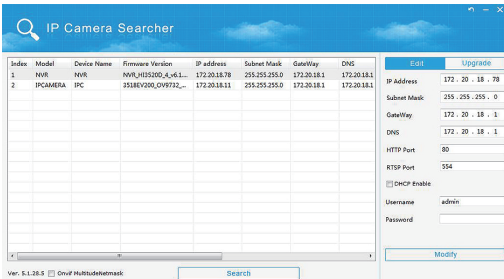
② Make sure the recorder and the connected PC are in the same segment. If your PC has different segment, please set IP address of your PC the same segment as the NVR' s, for example "172.20.18.79", but it must be different IP as the NVR' s. (Default IP address of NVR is 172.20.18.78.)

③ Open IE browser, enable all the ActiveX and plugins by this path: IE browser – Select Tools – Internet Options – Safty – Customized.

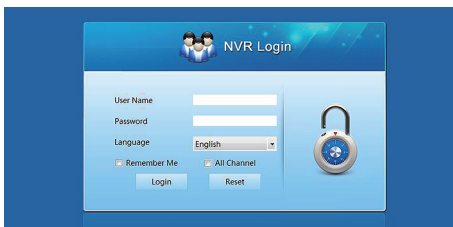
④ To pop up the webpage login interface, you can search the NVR with search tool and click the search result or input the NVR ip address (e.g.http://172. 20. 18. 78 /) directly. (If NVR http port 80 is changed, then you also need to add the correct port to IP address.)



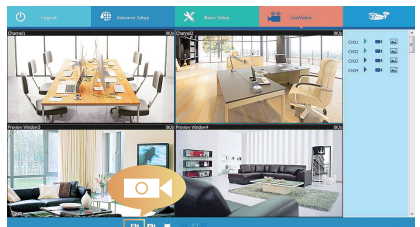
(Notice: For first time use, you may be requested to download and install the OCX plugin.)



⑤ On log in interface, log in NVR please.
Default user: admin, passwords: 12345.



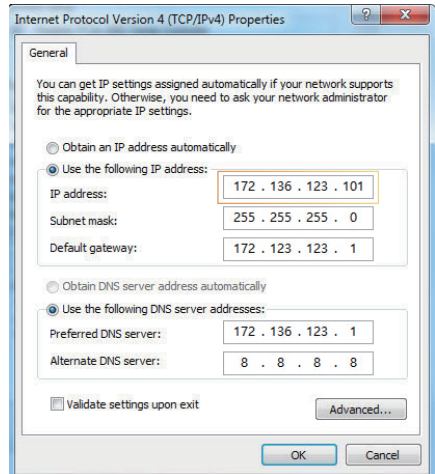
⑥ Webpage live view for NVR. On "Live Video" interface, click "Play" icon to play video.



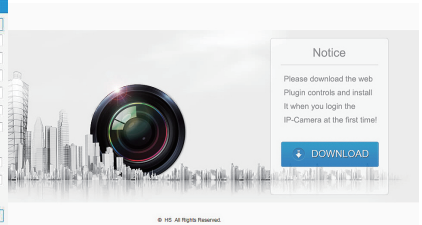
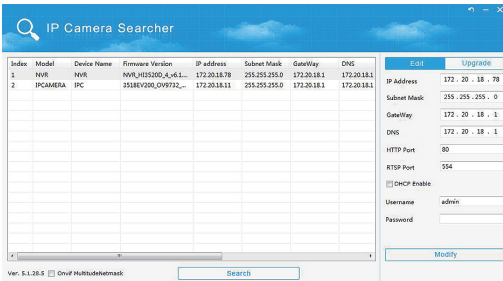
Webpage IPC Login

1. IPC Webpage LAN Access:

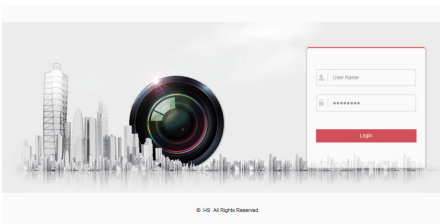
- ① Connect Lan port with network cable between your PC and IPC.
- ② Make sure the devices and the connected PC are in the same segment. If your PC has different segment, please set IP address of your PC the same segment as the device's, for example "172.136.123.101(101*200)", but it must be different IP as the NVR's and IPC's. (Default IP address of IPC is 172.136.123.100.)
- ③ Open IE browser, enable all the ActiveX and plugins by this path: IE browser – Select Tools – Internet Options – Safety – Customized.
- ④ To pop up the webpage login interface, you can search the webpage with search tool and click the search result or input the IPC ip address (e.g.http://172. 20. 18. 11 /) directly. (You can check IP address of IPC from menu "Remote Device" of NVR.)



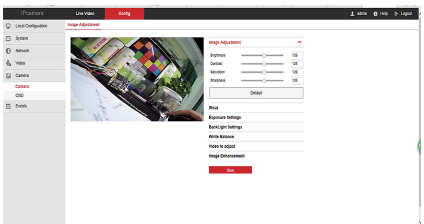
(Notice: For first time use, you may be requested to download and install the OCX plugin.)



- ⑤ On log in interface, log in IPC please.
Default user: **admin**, passwords: **admin**.



- ⑥ Webpage live view for IPC.

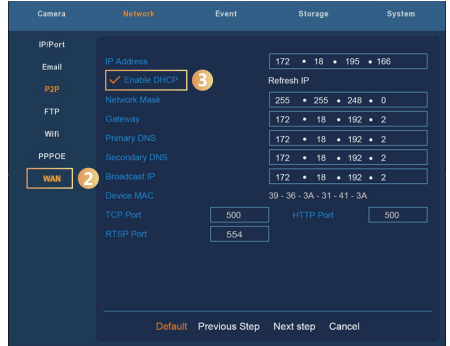


P2P WAN Access to NVR

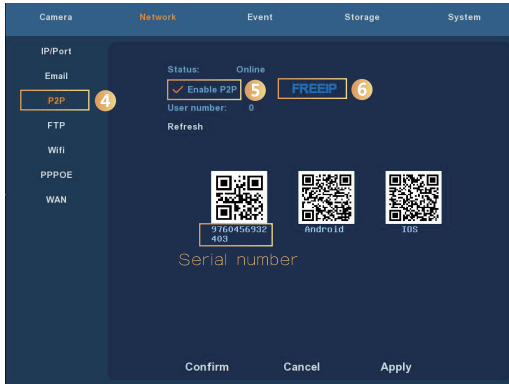
① Ensure NVR connected with WAN.



1. Enter "Network" interface.



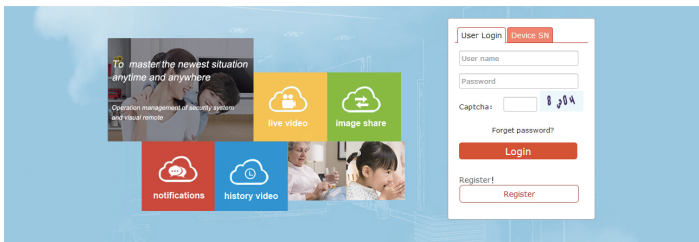
2. Under WAN page, enable DHCP.



3. Under P2P page, enable P2P. Click "Refresh" till status become Online.

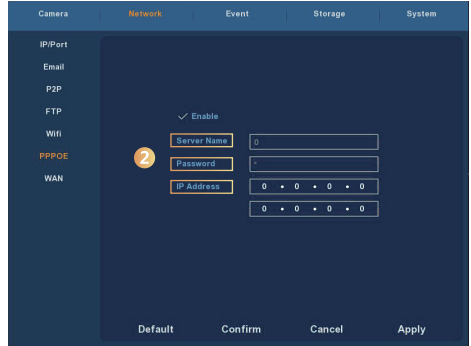
Also please check device S/N numbers on this page.

② Open a browser, input <http://www.freeip.com/>, a P2P webpage pop up, then select "Device SN" log in, input device series numbers, user, passwords and verification code to log in and view image through the P2P webpage.



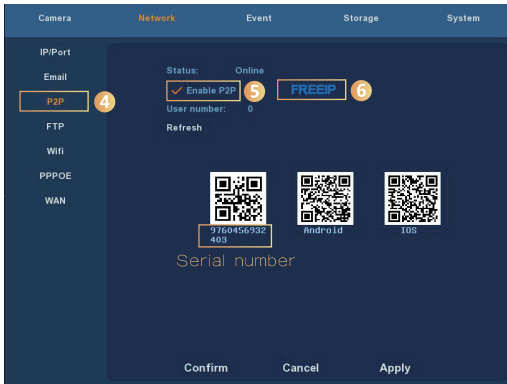
PPPOE WAN Access to NVR

① Ensure NVR connected with WAN.



1. Enter “Network” interface.

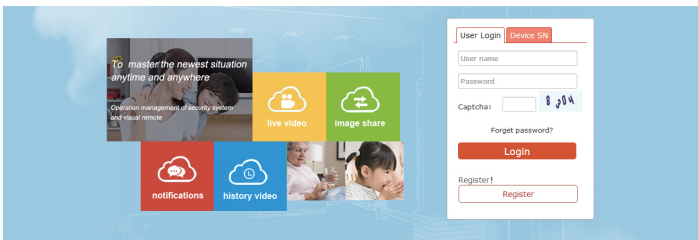
2. Under PPPOE page, input the server’s name, account and IP address.



3. Under P2P page, enable P2P. Click “Refresh” till status become Online.

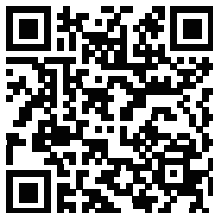
Also please check device S/N numbers on this page.

② Open a browser, input <http://www.freeip.com/>, a P2P webpage pop up, then select “Device SN” log in, input device series numbers, user, passwords and verification code to log in and view image through the P2P webpage.



Mobile APP Access

①1.Ensure NVR status Online. (Check status from menu “Network” – “P2P” – “Status”), Install APP FREEIP in your mobile phone. Scan the corresponding QR code as below, Android or iOS, then download and install FREEIP.



②3.Open mobile APP, select “SN Login” .1.Input S/N of NVR (NVR main menu→network→P2P interface can find the S/N, or scan QR code of NVR), user name(admin), password(12345) and verification code, then Login.

